



FEATURES

SUPPORT HD-SDI 1080P/720P CAMERA

- Audio support
- Fast forward and backward playback up to 256 times
- Multi level user management (admin and 100 users account)
- HDD stability monitoring using S.M.A.R.T function
- e-SATA Support
- 4TB HDD support
- Easy DDNS using your own domain name or MAC address
- Dual network video stream (H.264)
- Remote DVR monitoring function
- Easy network setup using UPnP

REMOTE S/W (CMS)

- Mac & Windows 100% compatible CMS
- Support maximum 256 channels
- All operations are integrated in one CMS
- 960H, TVI, HD-SDI
- live, search, playback, backup, e-map, remote DVR configuration
- Supports two live mode for single or multi DVR
- Fast and easy remote DVR search
- Convenient remote DVR access using group and DVR list management
- More than two CMS can be operated on dual monitor

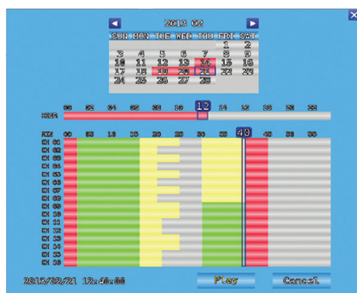
MOBIL

- iPhone, iPad, Android support
- 16 channel live monitoring & playback
- Audio support
- PTZ control
- Remote DVR relay control
- Landscape or portrait mode support



SPECIFICATION

Item		Watchman HD-SDI 4ch	Watchman HD-SDI 8ch
Video input	No. of Channel	4ch BNC	8ch BNC
Video output	Monitor	1ch HDMI, spot, 1ch VGA	
Multitasking		Quadplex	
Recording	Resolution	1920 x 1280/1920 x 540/ 960 x 540/ 1280 x 720/ 1280 x 360/ 640 x 360	
	Max. Speed	120fps at 1080p (NTSC)	
	Mode	100fps at 1080p (PAL) Schedule, Event(Sensor, Motion Detection), Manual, Continuous, Continuous + Event	
Display	Resolution	1024 x768 , 1280 x 720, 1280 x 1024, 1600 x 900, 1920 x 1080	
Search	Mode	Quick, Calendar, Bookmark, Event (Sensor, Motion Detection), USB	
Playback	Speed	x1,x2,x4,x8,x16,x32,x64,x128,x256, field by field (forward, backward)	
		x1/4,x1/2 Slow Motion (forward only), repeat A-B	
Audio Input		4ch	8ch
Audio Output		1ch	
Sensor Input		4 (NO/NC selectable)	
Alarm output(Relay)		1 Relay output	
Network	Speed & Type	10/100M (Static, DHCP, E-mail), UPnP, DDNS server available	
	Codec	Dual codec. (H.264)	
	Bandwidth limit	YES	
Storage	SATA	Internal HDD 2EA or Internal HDD 1EA + e-SATA 1EA	
	e-SATA		
Back-up		USB flash memory, network	
Password Protection		1 admin + 100 users	
Interface	PTZ Control	RS-485	
S/W upgrade		Network, USB flash memory	
Power source & Consumption		+12VDC/4A adaptor (100- 240VAC,50Hz/60Hz, 60W)	
Dimention(mm)		320(W) x 330(D) x70(H)	



< Search >



< CMS >



< Mobile >

