



# HD-SDI 1080P UH-VV8TD2



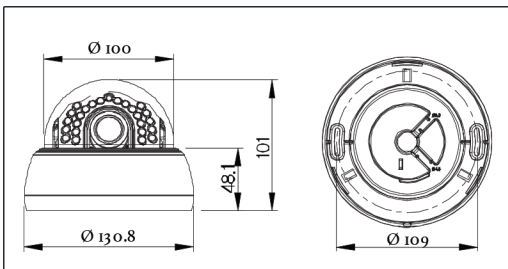
**Full HD**  
1920x1080

## FEATURES

- 1/2.9" SONY CMOS (2.1 Mega Pixel)
- HD-SDI (1080p@25/30fps) video output
- Verifocal Lens 2.8~12mm
- 3D-DNR, 3-Axis
- Day&Night function (ICR)
- OSD, Sens-Up
- RS-485 Interface
- Vandal-proof & Waterproof(IP68)
- LED 36pcs(0Lux 20M Range, Indoor)
- Dual Voltage(12V DC, 24V AC)
- Wall & ceiling mountable

## SPECIFICATIONS

## DIMENSIONS



### UH-VV8TD2

VIDEO	Image Sensor	1/2.9" SONY CMOS
	Effective Pixel	1936(H)x1097(V)
	Scanning System	Progressive Scan
	Resolution	Digital: 1080p (1920x1080)
	Video Output	HD-SDI (1080p@25/30fps)
	Min. Illumination	Color: 0.02Lux, BW: 0.5Lux
	LED	36pcs. Smart IR (30M Range)
	Focal Length	f = 2.8(W) ~ 12.0(T)mm
	Day & Night	ICR (Auto, Color, B/W)
	Backlight Compensation	BLC / HLC / WDR / OFF
OPERATION	Digital Noise Reduction (3D)	High / Middle / Low / Off
	Digital Zoom	ON/OFF (x2 ~ x62)
	Defog, DWDR	OFF / LOW/ MIDDLE / HIGH
	Motion Detection	ON/OFF
	Privacy Masking	ON/OFF (3 Zone Selectable)
	Sense-up	Auto (Selectable limit 2x ~ 30x)/OFF
	White Balance	Auto / Autoext / Manual
ENVIRONMENT	Ingress Protection	IP 68
	Operating Temp.	-10C ~ 50C
	Humidity	0% to 90%
FUNCTION	Protocol	PELCO D
	Communication	RS-485
ELECTRICAL (Power Supply)	Supplied Voltage	Max 1A(at 12v DC, 24V AC) : LED ON
	Power Consumption	Max 560mA(at 12v DC) : LED ON
	Heater	Yes
MECHANICAL	Dimension	Ø137.7 x 127.3(H) mm
	Weight	Approx. 1kg
	CE, FCC, ROHS	Yes